

HSS

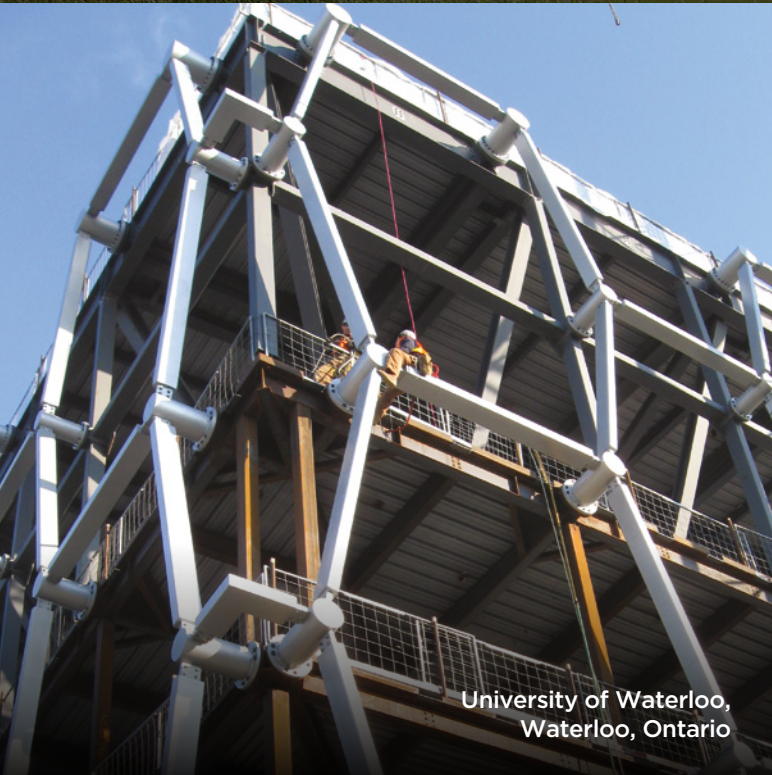
HOLLOW STRUCTURAL SECTIONS



Clinton Presidential Library,
Little Rock, Arkansas



Peak 2 Peak Gondola,
Whistler, British Columbia



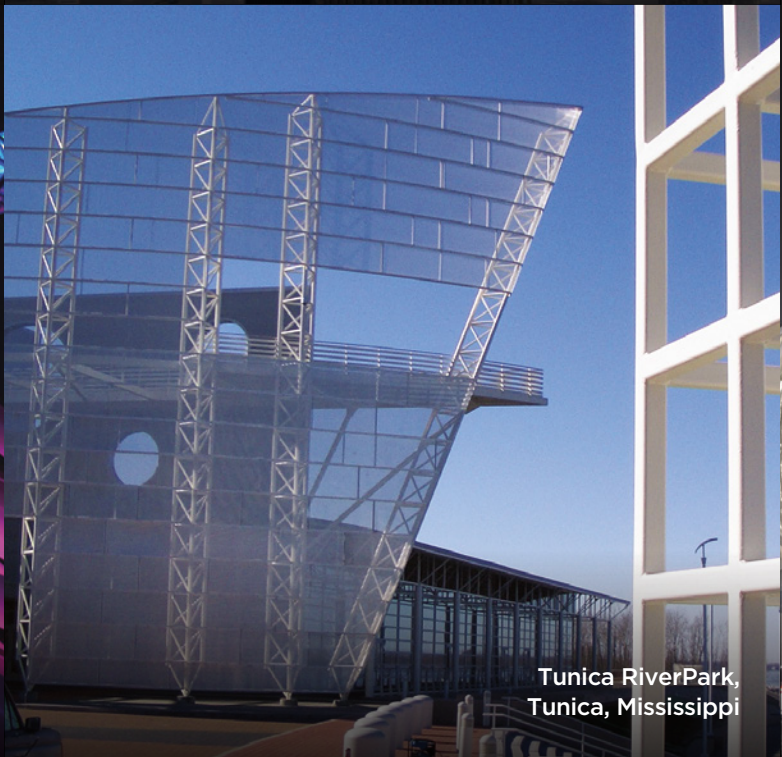
University of Waterloo,
Waterloo, Ontario



One Vanderbilt,
New York, New York



SkyDance Bridge,
Oklahoma City, Oklahoma



Tunica RiverPark,
Tunica, Mississippi



Big River Steel,
Osceola, Arkansas



Griffiths Pedestrian Bridge,
Burnaby, British Columbia



Hartsfield-Jackson
Atlanta International Airport,
Atlanta, Georgia

THE VERY BEST IN HSS

Founded in 1984, Atlas Tube is the leading North American producer of hollow structural sections, or HSS. Today we're known across the continent for our HSS capabilities, the quality and breadth of our product lines, our exceptional technical expertise, and our commitment to customer service.

WHY ATLAS TUBE?

- Exceptional manufacturing flexibility
- Shortest cycle times in the industry
- Breadth of value-added services
- Largest HSS size ranges
- Exclusive manufacturer of Jumbo HSS

OUR SIZE RANGE



SQUARE
0.5"-22"



RECTANGLE
1.5" x 1" - 34" x 10"

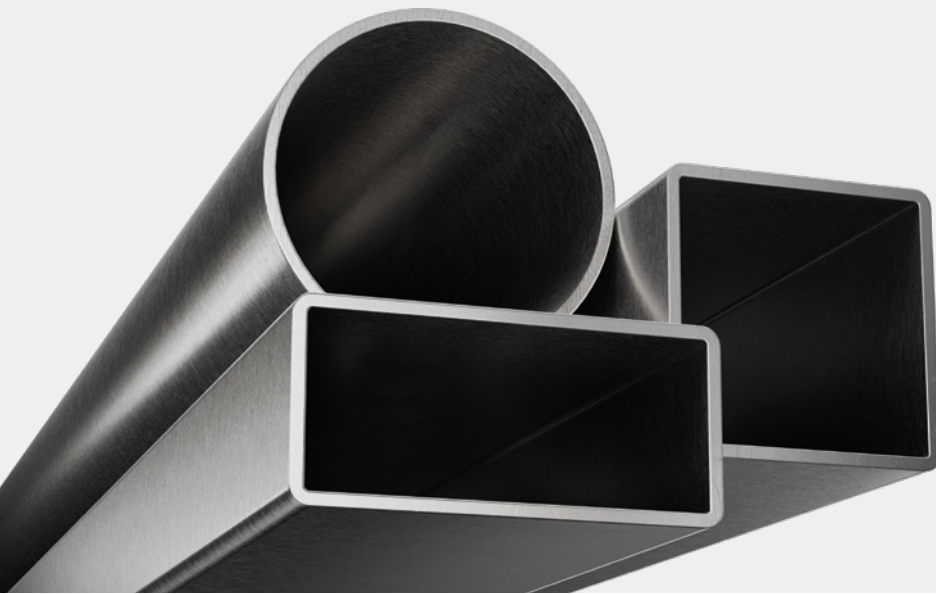


ROUND
0.84"-28"

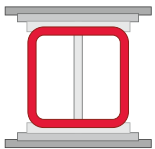
WALL THICKNESS: 0.065"-1" | MILL CUT LENGTHS: 18'-125'

BUILDING THE FUTURE WITH HSS

Hollow structural sections give architects, engineers and fabricators powerful tools to create the landmarks and infrastructure of tomorrow. The unique properties of HSS can help solve a variety of aesthetic and structural efficiency problems, making them attractive for projects big and small.

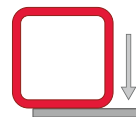


- High strength-to-weight ratios
- Uniform strength
- Cost-effective
- Aesthetically appealing
- Highly recyclable
- Easily coated or painted



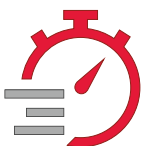
MORE STRENGTH, LESS STEEL

HSS offer excellent strength-to-weight ratios, allowing for greater axial capacity, more efficient utilization of the cross section and longer unbraced spans. That means they provide exceptional structural support, often with less total steel required to do the job.



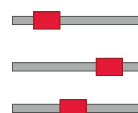
TOP-FLIGHT TORSIONAL RESISTANCE

HSS deliver exceptional torsional resistance, 200 times greater than that of an open section. That makes them an ideal choice for curved members, edge members that support eccentric loads and any other members with high torsional loads.



ROLLED RIGHT NEXT DOOR

Atlas Tube's five state-of-the-art facilities have the shortest cycle times and fastest order turnaround in the industry. We roll more than 1.2 million tons a year at our strategically located plants in Arkansas, Illinois, Alabama, Michigan and Ontario.



HOLLOW SECTIONS MADE TO ORDER

To minimize cost, waste and lost time, Atlas Tube can deliver product prepared to your specifications and ready for use upon delivery. A wide variety of services are available, including ID flash removal, specialty steel chemistries and thermal stress relief.



DEDICATED TO SUSTAINABILITY

We care about bringing manufacturing back to America, but we also care about keeping the country clean for future generations. That's why we work continuously to find new ways to recycle, improve manufacturing efficiency, and reduce our use of harmful chemicals and solvents.

REUSE, RECYCLE... REBUILD

Steel is the most recycled material on the planet, and between 60 and 80 million tons of steel are recycled each year in North America. Most structural steel in North America, including the majority of HSS, is produced from recycled steel.

FINDING NEW EFFICIENCIES

Of the 3,500 steel grades in use today, 75% did not exist 20 years ago, and modern grades have led to cleaner, more-efficient steel production. In fact, workforce productivity is nearly 10 times higher than it was in 1980, requiring just 1.5 worker-hours per ton.¹

DOMESTIC MEANS CLEANER

The American steel industry is the cleanest and most energy-efficient of the world's leading steel industries. Of the seven leading steel-producing countries, the U.S. has the lowest CO₂ emissions per ton of steel produced, as well as the lowest energy intensity.²

1. Wiseman, Paul. "Correction: Trump Tariffs-Steel Industry story." Associated Press, 2018.

<https://apnews.com/article/north-america-oh-state-wire-donald-trump-pa-state-wire-business-cae426730cd74e64932e4be7fa5cdeb>

2. Hasanbeigi, Ali, and Cecilia Springer. "How Clean is the U.S. Steel Industry?" Global Efficiency Intelligence, 2019.

<https://www.globalefficiencyintel.com/us-steel-industry-benchmarking-energy-co2-intensities>



MEET OUR NEWEST MILL

Our new facility in Blytheville, Arkansas, is the result of decades of experience in the steel industry, bringing together state-of-the-art technology and unrivaled domestic manufacturing capabilities. Spanning 515,000 square feet, the new facility is the largest continuous electric resistance weld (ERW) tube mill in the world, rolling the biggest hollow sections available in North America.

HIGH-TECH HSS

- New welding technology lets us shape 1"-thick sections.
- The line feeds into a fully automated warehouse, making inventory management a cinch.
- Quick-change technology enables us to change out rollers and stands in less than 60 minutes.

ATLAS TUBE JUMBO HSS

—MADE IN AMERICA—

SUPPORTING POSSIBILITIES

WITH THE WORLD'S LARGEST HSS

SHORTEST LEAD TIMES

With production cycles of just 2-4 weeks, our lead times are the shortest in the industry. And our North American network of service center partners are stocking our Jumbo HSS sizes, too, making them even easier to source for immediate use.

UNLIMITED APPLICATIONS

Jumbo HSS are perfect for any projects where efficiency or aesthetics are a priority. Proven applications include bridges, warehouses, airports, stadiums, multistory buildings, and DOT signs and structural supports.

Learn more at atlastube.com/jumbo

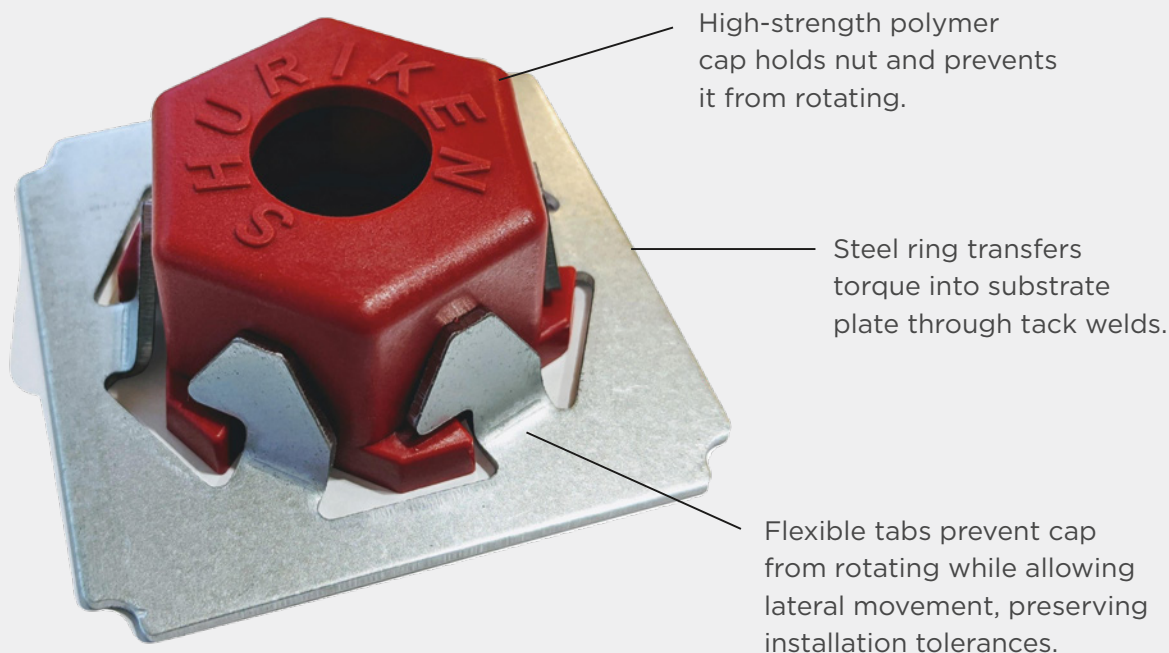


INTRODUCING

SHURIKEN™

SIMPLE BOLTED SPLICES

Shuriken is a revolutionary new system that makes it simple to perform field-bolted HSS column splices with standard A325 and A490 bolts. No need for field welds or complicated one-sided connectors — Shuriken mounts quickly in the shop and bolts go in quickly in the field, no special tools required.



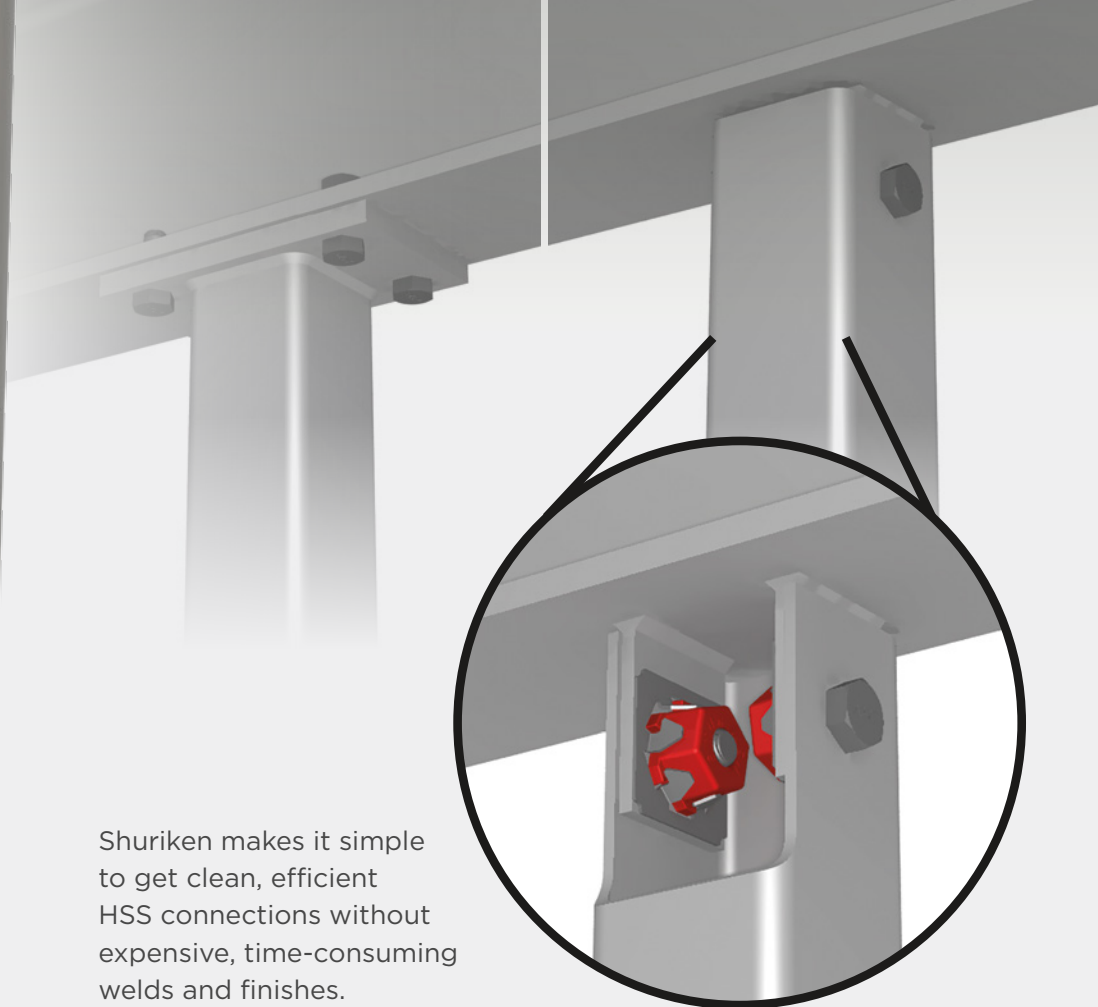
Want to learn more about Shuriken?

Get in touch with one of our structural engineers:

Ted Goldstein | Ted.Goldstein@atlastube.com

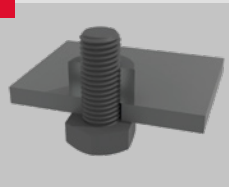
Brad Fletcher | Brad.Fletcher@atlastube.com

atlastube.com/shuriken



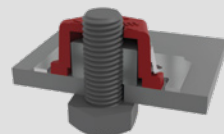
Shuriken makes it simple to get clean, efficient HSS connections without expensive, time-consuming welds and finishes.

1



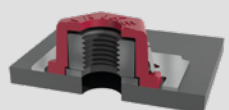
In the shop, insert a bolt and hand tighten it with a nut.

2



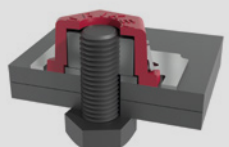
Place Shuriken over the nut and tack weld the steel ring to the substrate plate at all four corners.

3



Remove the bolt — the section is ready to go to the field.

4



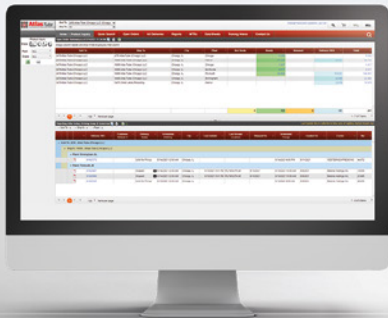
On-site, just insert a new bolt and tighten. Pretension can be verified with DTI washers.

WE SUPPORT YOU WITH MORE THAN JUST STEEL

Atlas Tube's HSS services reduce total construction project costs for labor, installation, shipping, administration and manufacturing. Atlas Tube HSS help you do more — in less time, with less steel and for less money.

OPTIMAL STOCKING

With Automated Inventory Management (AIM), you get the Atlas Tube HSS you need, when you need them, with auto-replenishments. With integrated production and logistics, AIM helps you turn inventory faster so you can free up cash and lower operating costs.



ATLAS SERVICE PORTAL

To improve ordering efficiency and scheduling accuracy, the Atlas e-commerce system uses EDI and SAP electronic information technology to let you view order and inventory status, test report data and more — all in real time.

WORLD'S BEST HSS DESIGN TOOLS

Atlas Tube gives you access to industry-leading HSS Design Tools from the Steel Tube Institute (STI) and the American Institute of Steel Construction (AISC). Our ongoing educational video series, "Designing With HSS," is available on our website and our YouTube page.





1855 East 122nd Street
Chicago, IL 60633

800.733.5683
info@atlastube.com
atlastube.com



1855 East 122nd Street
Chicago, IL 60633

P 800.733.5683

13101 Eckles Road
Plymouth, MI 48170

P 888.785.8823

6651 East State Hwy 137
Blytheville, AR 72315

P 800.838.2000

171 Cleage Drive
Birmingham, AL 35217

P 800.956.5440

200 Clark Street
Harrow, ON N0R 1G0

P 800.265.6912

info@atlastube.com
atlastube.com



Corporate Office

191 North Wacker Drive
Suite 2100
Chicago, IL 60606

P 312.275.1600
info@zekelman.com
zekelman.com

Made in North America

All Atlas Tube products are made right here in North America and support local steelworkers. Atlas Tube is proudly Canadian owned and a champion for American Metal—a national grassroots initiative that supports the domestic steel industry and all the hard workers whose livelihoods depend on it.



PROUDLY CANADIAN OWNED



About Atlas Tube

Atlas Tube, a division of Zekelman Industries, produces a wide range of steel tubular products and is the leading provider of hollow structural sections (HSS) in North America. Other offerings include HSS Design Tools and straight-seam electric resistance weld (ERW) pipe piling.

For more information, contact Atlas Tube at **800.733.5683** or **info@atlastube.com**. Or, visit our website at atlastube.com

Follow us on



twitter.com/atlastube



linkedin.com/company/zekelman-industries



youtube.com/ZekelmanIndustries



atlastube.com/atlas-observer

Additional resources for HSS applications can be found at aisc.org and cisc-icca.ca