

**NEW!** ATLAS TUBE  
**JUMBO HSS**  
MADE IN AMERICA

Big dreams need big tools to come alive — tools like Atlas Tube Jumbo HSS, the largest HSS made in America. Designed to support the longest spans and most extreme loads, Jumbo HSS make it possible to build taller and wider, with all the weight and efficiency advantages you expect from HSS. So start dreaming bigger today. Atlas Tube is ready to help bring those dreams to life.

SUPPORTING POSSIBILITIES

 **Atlas Tube**  
A DIVISION OF ZEKELMAN INDUSTRIES

# BIGGER SIZES FOR MORE SUPPORT

With Atlas Tube Jumbo HSS, you can dream big, building wider, taller and larger without compromising on functionality or aesthetics.

**Squares** up to 22" x 1" wall

**Rectangles** up to 34" x 10" x 1" wall

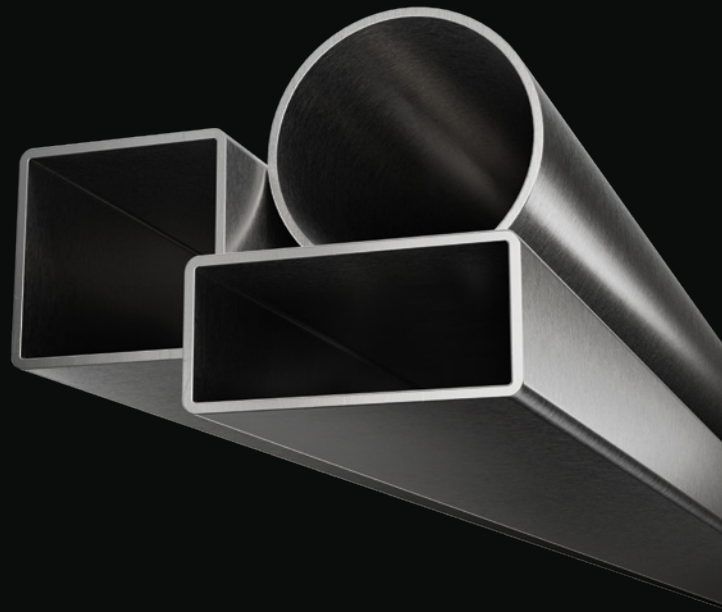
**Rounds** up to 28" OD x 1" wall

## SPECIFICATIONS

ASTM A500 | ASTM A1085 | CSA G40

## APPLICATIONS

Bridges | Warehouses | Airports | Multistory Buildings | Stadiums | DOT Signs & Structural Supports | And More



## MADE IN AMERICA FOR FAST DELIVERY

Opening in September 2021, our new mill in Blytheville, Arkansas, is the largest continuous electric resistance weld (ERW) tube mill in the world. In addition to rolling the biggest HSS sizes available in North America, the mill uses advanced "Quick Change" technology to minimize cycle times, meaning delivery lead times of just 2-4 weeks, the shortest in the industry.

## NEED MORE SUPPORT?

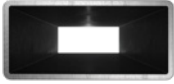
If you're ready to start designing and building with Atlas Tube Jumbo HSS, we're ready to help. Visit [atlastube.com](http://atlastube.com) for resources like webinars and product specs, or give us a call at 800.733.5683 to get your questions answered by our on-staff structural engineer.



# JUMBO HSS SQUARE

## SECTION PROPERTIES

SHAPE	DESIGN WALL THICKNESS	NOMINAL WEIGHT	AREA	b/t	h/t	I	S	r	TORSION			SURFACE AREA
	in.								lbs./ft.	in. <sup>2</sup>	in. <sup>4</sup>	
HSS 22" x 22" x 1"	0.930	277.07	76.2	20.7	20.7	5550	505	8.53	596	8890	823	7.07
HSS 22" x 22" x 7/8"	0.814	244.88	67.3	24.0	24.0	4970	452	8.59	530	7890	729	7.10
HSS 22" x 22" x 3/4"	0.698	212.00	58.2	28.5	28.5	4350	395	8.65	462	6860	632	7.13
HSS 22" x 22" x 5/8"	0.581	178.41	48.9	34.9	34.9	3710	337	8.71	390	5790	532	7.17
HSS 22" x 22" x 1/2"	0.465	144.13	39.5	44.3	44.3	3030	275	8.76	317	4700	431	7.20
HSS 20" x 20" x 1"	0.930	249.85	68.7	18.5	18.5	4100	410	7.73	486	6600	673	6.40
HSS 20" x 20" x 7/8"	0.814	221.06	60.8	21.6	21.6	3670	367	7.77	433	5870	597	6.43
HSS 20" x 20" x 3/4"	0.698	191.58	52.6	25.7	25.7	3230	323	7.84	378	5110	519	6.47
HSS 20" x 20" x 5/8"	0.581	161.40	44.3	31.4	31.4	2750	275	7.88	320	4320	437	6.50
HSS 20" x 20" x 1/2"	0.465	130.52	35.8	40.0	40.0	2260	226	7.95	261	3510	355	6.53
HSS 20" x 20" x 3/8"	0.349	98.94	27.1	54.3	54.3	1740	174	8.01	199	2680	269	6.57
HSS 18" x 18" x 1"	0.930	222.63	61.3	16.4	16.4	2920	324	6.90	387	4740	539	5.73
HSS 18" x 18" x 7/8"	0.814	197.24	54.3	19.1	19.1	2630	292	6.96	346	4220	479	5.77
HSS 18" x 18" x 3/4"	0.698	171.16	47.1	22.8	22.8	2320	258	7.02	302	3690	417	5.80
HSS 18" x 18" x 5/8"	0.581	144.39	39.6	28.0	28.0	1980	220	7.07	257	3120	352	5.83
HSS 18" x 18" x 1/2"	0.465	116.91	32.1	35.7	35.7	1630	181	7.13	210	2540	286	5.87
HSS 18" x 18" x 3/8"	0.349	88.73	24.3	48.6	48.6	1250	139	7.17	160	1940	217	5.90
HSS 16" x 16" x 1"	0.930	195.40	53.8	14.2	14.2	1990	249	6.08	300	3270	419	5.07
HSS 16" x 16" x 7/8"	0.814	173.43	47.7	16.7	16.7	1800	225	6.14	268	2920	373	5.10
HSS 16" x 16" x 3/4"	0.698	150.75	41.5	19.9	19.9	1590	199	6.19	235	2560	326	5.13
HSS 14" x 14" x 1"	0.930	168.18	46.4	12.1	12.1	1290	184	5.27	224	2130	315	4.40
HSS 14" x 14" x 7/8"	0.814	149.61	41.2	14.2	14.2	1170	167	5.33	201	1910	281	4.43
HSS 14" x 14" x 3/4"	0.698	130.33	35.9	17.1	17.1	1040	149	5.38	177	1680	246	4.47
HSS 12" x 12" x 3/4"	0.698	109.91	30.3	14.2	14.2	631	105	4.56	127	1030	177	3.80
HSS 10" x 10" x 3/4"	0.698	89.50	24.7	11.3	11.3	347	69.4	3.75	85	578	119	3.13



# JUMBO HSS RECTANGLE

## SECTION PROPERTIES

SHAPE	DESIGN WALL THICKNESS	NOMINAL WEIGHT	AREA	b/t	h/t	AXIS X-X					AXIS Y-Y			TORSION		SURFACE AREA
	in.					lbs./ft.	in. <sup>2</sup>	in. <sup>4</sup>	in. <sup>3</sup>	in.	in. <sup>3</sup>	in. <sup>4</sup>	in. <sup>3</sup>	in.	in. <sup>3</sup>	
HSS 34" x 10" x 1"	0.930	277.07	76.2	7.8	33.6	9600	565	11.22	750	1340	268	4.19	307	4040	555	7.07
HSS 34" x 10" x 7/8"	0.814	244.88	67.3	9.3	38.8	8600	506	11.30	668	1210	242	4.24	274	3630	494	7.10
HSS 34" x 10" x 3/4"	0.698	212.00	58.2	11.3	45.7	7550	444	11.39	582	1070	214	4.29	240	3190	431	7.13
HSS 34" x 10" x 5/8"	0.581	178.41	48.9	14.2	55.5	6430	378	11.47	493	920	184	4.34	205	2720	365	7.17
HSS 30" x 10" x 1"	0.930	249.85	68.7	7.8	29.3	6900	460	10.02	606	1184	237	4.15	273	3460	487	6.40
HSS 30" x 10" x 7/8"	0.814	221.06	60.8	9.3	33.9	6190	413	10.09	540	1073	215	4.20	245	3110	434	6.43
HSS 30" x 10" x 3/4"	0.698	191.58	52.6	11.3	40.0	5440	363	10.17	471	952	190	4.25	215	2730	379	6.47
HSS 30" x 10" x 5/8"	0.581	161.40	44.3	14.2	48.6	4640	309	10.23	400	820	164	4.30	183	2330	321	6.50
HSS 30" x 10" x 1/2"	0.465	130.52	35.8	18.5	61.5	3810	254	10.32	326	679	136	4.36	149	1910	262	6.53
HSS 24" x 12" x 1"	0.930	222.63	61.3	9.9	22.8	4340	362	8.41	459	1460	243	4.88	282	3630	472	5.73
HSS 24" x 12" x 7/8"	0.814	197.24	54.3	11.7	26.5	3910	326	8.49	410	1320	220	4.93	252	3250	420	5.77
HSS 24" x 12" x 3/4"	0.698	171.16	47.1	14.2	31.4	3440	287	8.55	359	1170	195	4.98	221	2850	366	5.80
HSS 24" x 12" x 5/8"	0.581	144.39	39.6	17.7	38.3	2940	245	8.62	304	1000	167	5.03	188	2430	310	5.83
HSS 24" x 12" x 1/2"	0.465	116.91	32.1	22.8	48.6	2420	202	8.68	248	830	138	5.08	154	1980	252	5.87
HSS 24" x 12" x 3/8"	0.349	88.73	24.3	31.4	65.8	1860	155	8.75	190	640	107	5.13	118	1520	192	5.90
HSS 20" x 12" x 1"	0.930	195.40	53.8	9.9	18.5	2740	274	7.14	344	1229	205	4.78	241	2820	390	5.07
HSS 20" x 12" x 7/8"	0.814	173.43	47.7	11.7	21.6	2480	248	7.21	308	1114	186	4.83	216	2530	347	5.10
HSS 20" x 12" x 3/4"	0.698	150.75	41.5	14.2	25.7	2190	219	7.26	270	988	165	4.88	190	2220	303	5.13
HSS 20" x 8" x 1"	0.930	168.18	46.4	5.6	18.5	2060	206	6.66	273	472	118	3.19	140.5	1322	248	4.40
HSS 20" x 8" x 7/8"	0.814	149.61	41.2	6.8	21.6	1880	188	6.76	246	432	108	3.24	126.9	1199	222	4.43
HSS 20" x 8" x 3/4"	0.698	130.33	35.9	8.5	25.7	1668	166.8	6.82	216	388	97	3.29	112.3	1064	195	4.47
HSS 18" x 6" x 3/4"	0.698	109.91	30.3	5.6	22.8	1061	118	5.92	158	179	59.7	2.43	70.4	530	127	3.80
HSS 16" x 12" x 1"	1.000	168.18	49.4	9.0	13.0	1650	206	5.78	258	1051	175	4.61	211	2150	326	4.38
HSS 16" x 12" x 7/8"	0.814	149.61	41.2	11.7	16.7	1430	179	5.89	219	910	152	4.70	179	1830	274	4.43
HSS 16" x 12" x 3/4"	0.698	130.33	35.9	14.2	19.9	1266	158	5.94	193	810	135	4.75	158	1610	240	4.47
HSS 16" x 8" x 7/8"	0.814	125.79	34.7	6.8	16.7	1050	131	5.50	170	348	87	3.17	103.6	888	176	3.77
HSS 16" x 8" x 3/4"	0.698	109.91	30.3	8.5	19.9	939	117.4	5.57	150	314	78.5	3.22	91.9	790	155	3.80
HSS 14" x 10" x 7/8"	0.814	125.79	34.7	9.3	14.2	886	126.6	5.05	158	522	104.4	3.88	124.9	1097	195	3.77
HSS 14" x 10" x 3/4"	0.698	109.91	30.3	11.3	17.1	792	113.1	5.11	139.7	468	93.6	3.93	110.6	970	171	3.80



# JUMBO HSS ROUND

## SECTION PROPERTIES

SHAPE	OD	NOMINAL WALL THICKNESS	DESIGN WALL THICKNESS	NOMINAL WT.	AREA	D/t	I	S	r	Z	J	C	SURFACE AREA
	in.	in.	in.	lbs./ft.	in. <sup>2</sup>		in. <sup>4</sup>	in. <sup>3</sup>	in.	in. <sup>3</sup>	in. <sup>4</sup>	in. <sup>3</sup>	ft. <sup>2</sup> /ft.
HSS 28" x 1.000"	28	1.000	0.930	288.63	79.1	30.1	7250	518	9.57	682	14500	1036	7.33
HSS 28" x 0.875"	28	0.875	0.814	253.72	69.5	34.4	6430	459	9.62	602	12860	919	7.33
HSS 28" x 0.750"	28	0.750	0.698	218.48	59.9	40.1	5580	399	9.65	520	11160	797	7.33
HSS 28" x 0.625"	28	0.625	0.581	182.90	50.0	48.2	4710	336	9.71	437	9420	673	7.33
HSS 28" x 0.500"	28	0.500	0.465	146.99	40.2	60.2	3810	272	9.74	353	7620	544	7.33
HSS 24" x 1.000"	24	1.000	0.930	245.87	67.4	25.8	4490	374	8.16	495	8980	748	6.28
HSS 24" x 0.875"	24	0.875	0.814	216.31	59.3	29.5	3990	333	8.20	438	7980	665	6.28
HSS 24" x 0.750"	24	0.750	0.698	186.41	51.1	34.4	3470	289	8.24	379	6940	578	6.28
HSS 24" x 0.625"	24	0.625	0.581	156.18	42.7	41.3	2930	244	8.28	319	5860	488	6.28
HSS 24" x 0.500"	24	0.500	0.465	125.61	34.4	51.6	2380	198	8.32	258	4760	397	6.28
HSS 24" x 0.375"	24	0.375	0.349	94.71	25.9	68.8	1810	151	8.36	195	3620	302	6.28
HSS 20" x 1.000"	20	1.000	0.930	203.11	55.7	21.5	2540	254	6.75	338	5080	508	5.24
HSS 20" x 0.875"	20	0.875	0.814	178.89	49.1	24.6	2260	226	6.78	300	4520	452	5.24
HSS 20" x 0.750"	20	0.750	0.698	154.34	42.3	28.7	1970	197	6.82	260	3940	394	5.24
HSS 18" x 1.000"	18	1.000	0.930	181.73	49.9	19.4	1820	202	6.04	271	3640	404	4.71
HSS 18" x 0.875"	18	0.875	0.814	160.19	43.0	22.1	1626	181	6.09	241	3250	361	4.71
HSS 18" x 0.750"	18	0.750	0.698	138.30	37.9	25.8	1422	158	6.13	209	2840	316	4.71
HSS 16" x 1.000"	16	1.000	0.930	160.35	44.0	17.2	1255	157	5.34	211	2510	314	4.19
HSS 16" x 0.875"	16	0.875	0.814	141.48	38.8	19.7	1123	140.4	5.38	188	2250	281	4.19
HSS 16" x 0.750"	16	0.750	0.698	122.27	33.6	22.9	984	123	5.41	163.6	1970	246	4.19
HSS 14" x 1.000"	14	1.000	0.930	138.97	38.2	15.1	820	117.1	4.63	159	1640	234	3.67
HSS 14" x 0.875"	14	0.875	0.814	122.77	33.7	17.2	736	105.1	4.67	141.7	1472	210	3.67
HSS 14" x 0.750"	14	0.750	0.698	106.23	29.2	20.1	647	92.4	4.71	123.6	1294	185	3.67
HSS 12.75" x 0.875"	12.75	0.875	0.814	111.08	30.5	15.7	546	85.6	4.23	116.1	1092	171	3.34
HSS 12.75" x 0.750"	12.75	0.750	0.698	96.21	26.4	18.3	481	75.5	4.27	101.5	962	151	3.34



1855 East 122nd Street  
Chicago, IL 60633

P 800.733.5683

13101 Eckles Road  
Plymouth, MI 48170

P 888.785.8823

6651 East State Hwy 137  
Blytheville, AR 72315

P 800.838.2000

171 Cleage Drive  
Birmingham, AL 35217

P 800.956.5440

200 Clark Street  
Harrow, ON NOR 1G0

P 800.265.6912

info@atlastube.com  
atlastube.com



#### Corporate Office

227 West Monroe Street  
Suite 2600  
Chicago, IL 60606

P 312.275.1600  
info@zekelman.com  
zekelman.com

## About Atlas Tube

Atlas Tube, a division of Zekelman Industries, produces a wide range of steel tubular products and is the leading provider of hollow structural sections (HSS) in North America. Other offerings include HSS Design Tools and straight-seam electric resistance weld (ERW) pipe piling.

For more information, contact Atlas Tube at **800.733.5683** or **info@atlastube.com**. Or, visit our website at [atlastube.com](http://atlastube.com)

Follow us on



[twitter.com/atlastube](https://twitter.com/atlastube)



[linkedin.com/company/zekelman-industries](https://linkedin.com/company/zekelman-industries)



[youtube.com/ZekelmanIndustries](https://youtube.com/ZekelmanIndustries)



[atlastube.com/atlas-observer](http://atlastube.com/atlas-observer)

*Additional resources for HSS applications can be found at [aisc.org](http://aisc.org) and [cisc-icca.ca](http://cisc-icca.ca)*