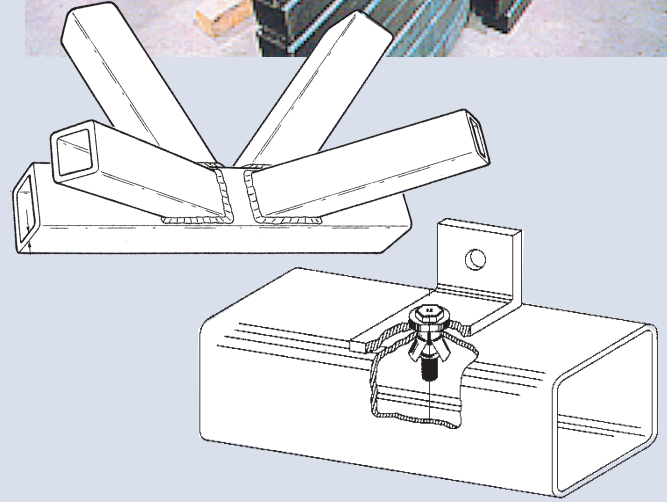
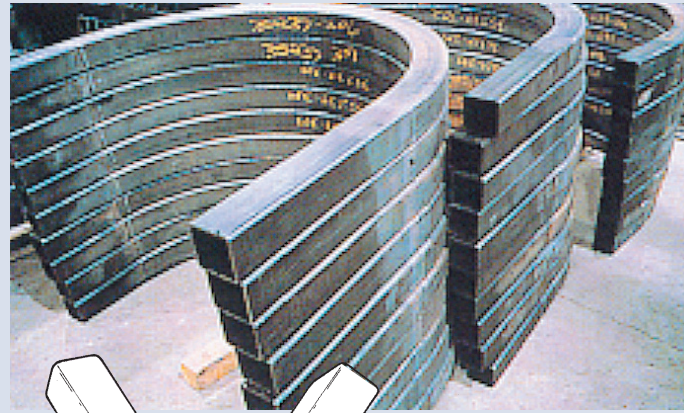


Ease of Fabrication

HSS can be readily bent, formed, punched and drilled. New and improved methods to fasten HSS to itself or to other materials are making its use simpler and fabrication faster.

- 22.3% less surface area to paint or coat on a typical section.
- Easier faster and cheaper to paint or coat (no return angles).
- Easier to weld in both the shop and field (due to restricted chemistries) no preheating or post-heating is required.
- Faster layout in the shop.
- Less weld to be applied when joining.
- Easier to fit mating parts together (no notching or coping of joints as with beams or channels).
- Easily cut by a variety of methods either square or mitre.
- Reduced weight means additional savings in erection and shipping costs.



Environmentally Friendly

HSS is made from steel, one of the world's most recyclable and recycled materials.

Further Processing

- Galvanizing for corrosion protection
- Thermal stress relief to enhance engineering properties
- Coated to meet the requirements of a variety of applications from automotive to construction.

Readily Available...

Due to the large number of producers in North America. Sixteen companies are listed as members of the Steel Tube Institute of North America with locations in Canada, United States and Mexico.



SQUARE HSS

	5 x 5					4½ x 4½					4 x 4					3½ x 3½				3 x 3				2½ x 2½								
	1/2	3/8	5/16	1/4	3/16	1/8	1/2	3/8	5/16	1/4	3/16	1/8	1/2	3/8	5/16	1/4	3/16	1/8	3/8	5/16	1/4	3/16	1/8	3/8	5/16	1/4	3/16	1/8	5/16	1/4	3/16	1/8
Atlas Tube, Inc.	•	•	•	•	•	•	•	•	•	•	•	•	•	•	•	•	•	•	•	•	•	•	•	•	•	•	•	•	•	•	•	•
Bull Moose Tube Co.	•	•	•	•	•	•	•	•	•	•	•	•	•	•	•	•	•	•	•	•	•	•	•	•	•	•	•	•	•	•	•	•
Eugene Welding Co.																																
Hanna Steel Corp.		•	•	•	•	•	•	•	•	•	•	•	•	•	•	•	•		•	•	•	•	•	•	•	•	•					
Hannibal Industries, Inc.																																
Independence Tube Corp.	•	•	•	•	•	•	•	•	•	•	•	•	•	•	•	•	•	•	•	•	•	•	•	•	•	•	•	•	•	•	•	•
IPSCO Tubulars Inc.**	•	•	•	•	•	•						•	•	•	•	•	•	•	•	•	•	•	•	•	•	•	•					
Leavitt Tube	•	•	•	•	•	•						•	•	•	•	•	•	•	•	•	•	•	•	•	•	•	•	•	•	•	•	•
LTV Copperweld	•	•	•	•	•	•	•	•	•	•	•	•	•	•	•	•	•	•	•	•	•	•	•	•	•	•	•	•	•	•	•	•
Maverick Tube Corp.	•	•	•	•	•	•						•	•	•	•	•	•		•	•	•	•	•	•	•	•	•	•	•	•	•	•
Northwest Pipe Co.																																
Novamerican		•	•	•	•	•						•	•	•	•	•	•		•	•	•	•	•	•	•	•	•					
Prolamsa				•	•					•	•				•	•						•	•									
Valmont Industries				•	•										•	•																
Vest, Incorporated**	•	•	•	•	•	•						•	•	•	•	•	•	•	•	•	•	•	•	•	•	•	•					
Welded Tube of Canada Ltd.	•	•	•	•	•	•	•	•	•	•	•	•	•	•	•	•	•	•	•	•	•	•	•	•	•	•	•	•	•	•	•	•

