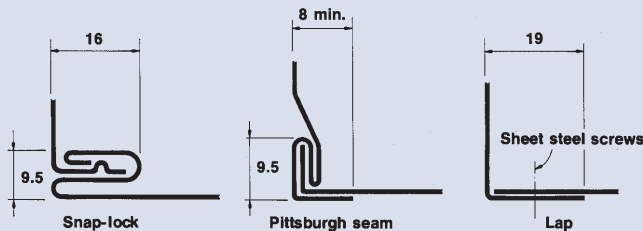
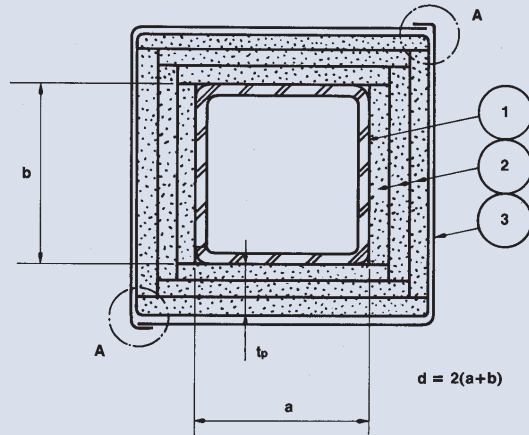
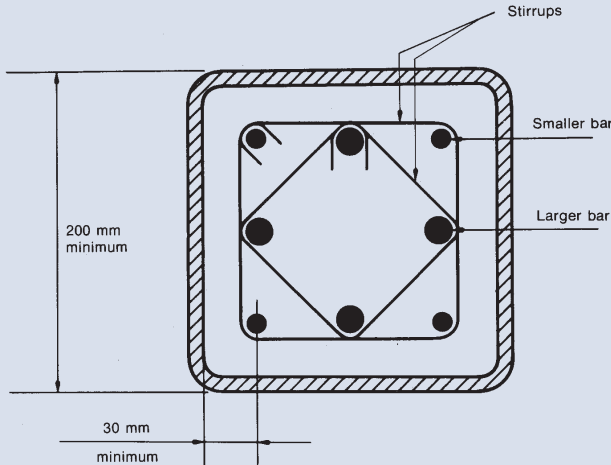


Resistant and Consistent

HSS is fire resistant and does not warp, twist, split, swell or shrink. It resists dry rot and mildew, as well as termites and carpenter ants. For increased fire resistance, the exterior of the product may be sprayed with a fire retardant material or boxed in with drywall. The interior can be filled with concrete or a combination of concrete and rebar for added strength.



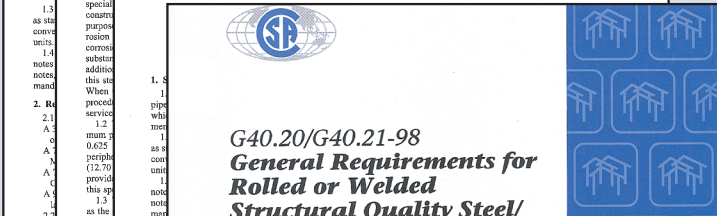
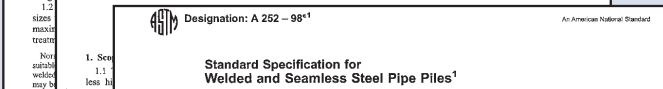
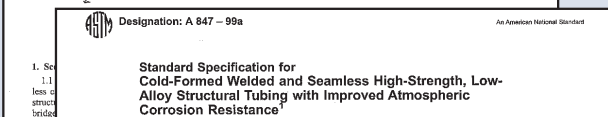
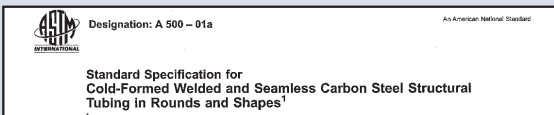
Legend:

- 1 HSS column
- 2 Gypsum wallboard (any ULC classified), in layers as required.
- 3 Uncoated, galvanized or prefinished sheet steel column cover. Minimum thickness 0.60 mm for Pittsburgh and Snaplock joints and 0.70 mm for Lap joints. For one and two hour column protection designs, the steel cover may be placed *under* the outermost wallboard layer.

Uniformity

HSS provides a uniformity of size, gauge, shape, strength and tolerances that make its use totally predictable.

Available in a variety of strength levels, impact values and specifications.



HSS Design Aids

The Steel Tube Institute offers a wide variety of technical publications, load tables and design aids. They are available on the STI website, www.steeltubeinstitute.org. The Steel Tube Institute also employs a Technical Consultant who is available to answer questions and assist with technical data.

